

INJURIES IN THE ACCOMMODATION AND FOOD SERVICES SUB-SECTOR

2000-2010

March 2010



EXECUTIVE SUMMARY

This report presents injury data on the accommodation and food services sub-sector for 2000 to 2010.

Some important findings include:

- A time loss injury rate of 1.9 time loss injuries in 2009, this sector remaining consistently below the time loss injury rate for all MB workers since 2000.
- A reduction in the time loss injury rate of 30% since 2000, compared to a 37.5% reduction in the Manitoba time loss rate.
- Injuries in the accommodation and food services sub-sector decreased by 33% in injuries between 2000 and 2010, a 25% decrease in time loss and a 38% decrease in no time loss injuries. All industries in Manitoba have seen a 23% decline in injuries over the same period.
- Distinctive to this sector is the fact that young workers, 15 to 24 years old, incur 44% of the injuries, compared to 16% in all sectors.
- Injured workers in this sub-sector are younger. The median age of injured workers is 26 years (compared to 40 years for all MB workers). Almost one in five (18%) of injured workers are 45+, (compared to 38% overall). Injuries for accommodation and food services workers 45-54 increased 6% from 2000 to 2010 while injuries to workers 55+ increased 86%.
- In accommodation and food services, 21% of time loss injuries are injuries to the fingers with an additional 18% of injuries to the back including spine and spinal cord and another 14% to hands/wrists, except fingers.
- Almost 37% of injuries are sprains, strains and tears, a lower percentage than the percentage for all Manitoba workers (53%). Open wounds accounted for another 22% of the time loss injuries to workers.
- While 21% of time loss injuries have structures and surfaces as the source of injuries to accommodation and food services workers, bodily motion or position of the worker account for 18% of the injuries. Containers accounted for another 16% and non-powered hand tools also contributed to 12% of the injuries to workers in this sub-sector.

- More than 21% of accommodation and food services time loss injuries have been struck by objects as the cause of injury, compared to 16% for all Manitoba workers.
- Forty one % of accommodation and food services time loss injuries were musculoskeletal in 2010, compared to 59% for all workers. The rate of musculoskeletal injury in accommodation and food services has decreased by 27% since 2000, compared to a drop of 31% in the non-musculoskeletal injury rate.
- Cooks, food counter attendants and kitchen helpers, food and beverage servers, light duty cleaners, restaurant and food service managers incur about 70% of injuries in this service sub-sector

SUMMARY OF FINDINGS: INJURED WORKER CHARACTERISTICS

Table 1 Summary Findings

CATEGORY	ACCOMMODATION AND FOOD SERVICES
Time loss Injury Rate 2009	<ul style="list-style-type: none"> 1.9 time loss injuries per 100 FTEs in 2009
All Injury rate 2009	<ul style="list-style-type: none"> 4.2 injuries per 100 FTEs in 2009
Injuries	<ul style="list-style-type: none"> Time loss 44%, no time loss 55%. 25% decrease in time loss and 38% decrease in no time loss injuries since 2000
Gender	<ul style="list-style-type: none"> Female 55% male 45%
Age	<ul style="list-style-type: none"> Almost half (44%) of injured workers are 15-24 years old. Median age of injured workers is 31 years; average age of injured workers is 26 years.
Stickman Part of Body (All Injuries)	<ol style="list-style-type: none"> Hands and fingers (44%) Multiple parts (14%) Lower arm (9%) Lower back (8%) Lower leg (7%)
Body Part (Time Loss)	<ol style="list-style-type: none"> Fingers (21%) Back including spine and spinal cord (18%) Hands/ wrists (14%) Multiple parts (11%) Other upper extremities (9%).
Nature of Injury (Time Loss)	<ol style="list-style-type: none"> Sprains, strains and tears (37%). Open wounds (22%) Burns (13%) Surface wounds and bruises (9%) Other traumatic injuries (8%).
Source of Injury (Time Loss)	<ol style="list-style-type: none"> Structures and surfaces (21%) Bodily position of worker (18%) Containers (16%) Non-powered hand tools (12%) Machinery (9%).

CATEGORY	ACCOMMODATION AND FOOD SERVICES
Event Causing Injury (Time Los)	<ol style="list-style-type: none"> 1. Struck by objects (21%) 2. Fall on same level (17%) 3. Bending, twisting, reaching, crawling (14%) 4. Exposure to harmful substances (15%) 5. Overexertion (12%)
Occupations (time loss)	<ol style="list-style-type: none"> 1. Cooks (27%) 2. Food counter attendants (19%) 3. Food and beverage servers (12%) 4. Light duty cleaners (9%) 5. Restaurant managers (4%).
Musculoskeletal Injuries (Time Loss)	<ul style="list-style-type: none"> • 41% are MSIs in 2010 • MSI injury Rate is 0.8 time loss MSIs per 100 FTEs in 2009 • Non-MSI rate is 1.1 MSIs per 100 FTEs in 2009 • The non-MSI rate has declined 31% since 2000 compared to a 27% decline in the MSI rate

KEY INJURY AND ILLNESS STATISTICS 2000-2010

Figure 1 Time loss and All Injury Rate for Accommodation and Food Services

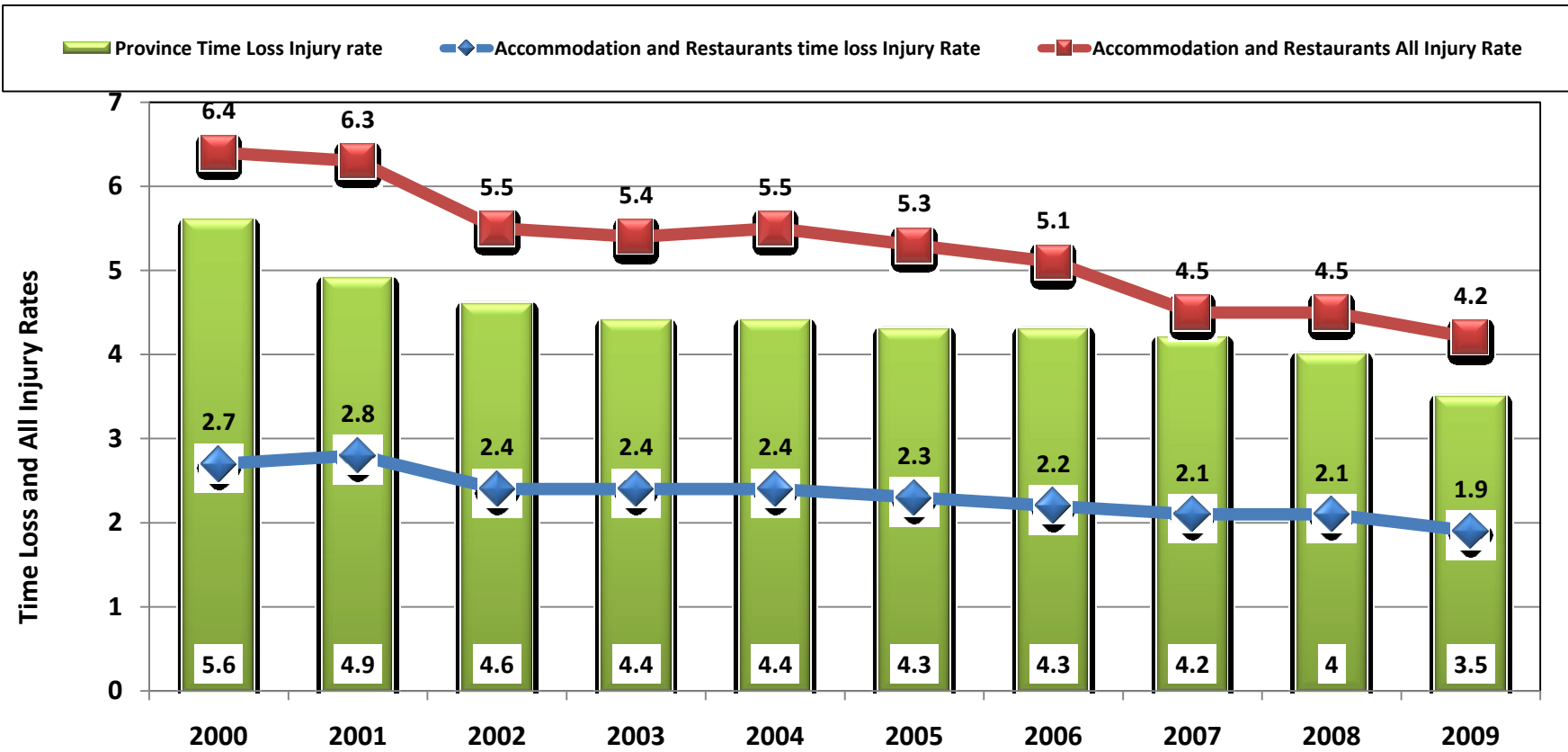


Figure 2 MSI and Non-MSI Injury Rate

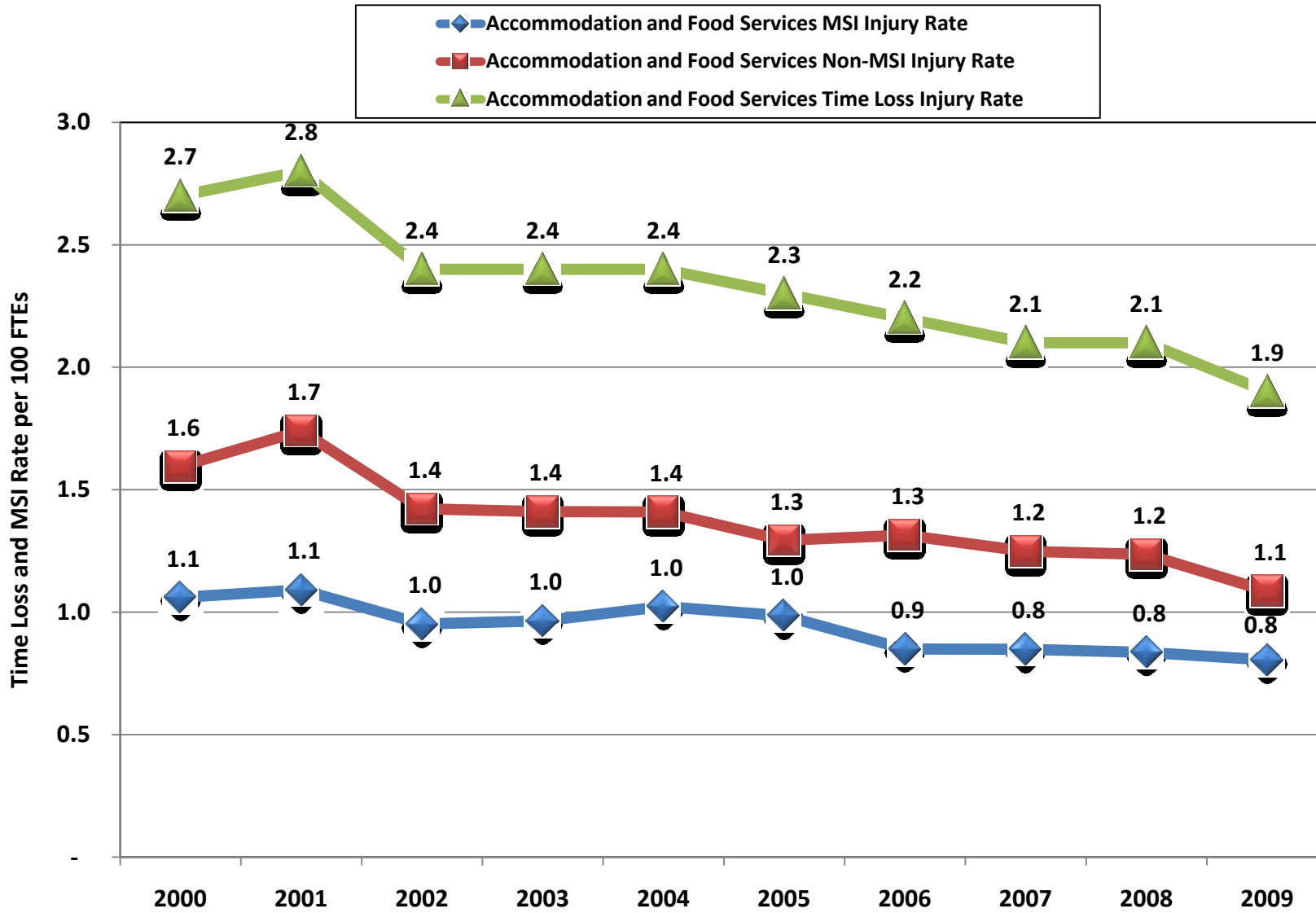


Table 2 Time loss and No Time loss Injury Trends

TYPE OF INJURY	2000	2001	2002	2003	2004	2005	2006	2007	2008	2009	2010	TOTAL	% OF TOTAL	% CHANGE 2010 VS. 2000
Time loss	814	841	706	709	725	680	703	709	736	714	608	7,945	44.2%	-25.3%
No Time Loss	1,154	1,022	926	897	920	900	936	819	865	853	719	10,011	55.8%	-37.7%
Total	1,968	1,863	1,632	1,606	1,645	1,580	1,639	1,528	1,601	1,567	1,327	17,956	100.0%	-32.6%

Table 3 Injury Trends by Gender

Gender	2000	2001	2002	2003	2004	2005	2006	2007	2008	2009	2010	Total	% of Total	% Change 2010 vs. 2000
Female	1,053	989	886	875	888	869	913	836	913	879	771	9,872	55.0%	-26.8%
Male	879	854	733	724	739	703	719	684	683	681	553	7,952	44.3%	-37.1%
Missing	36	20	13	7	18	8	7	8	5	7	3	132	0.7%	-91.7%
Total	1,968	1,863	1,632	1,606	1,645	1,580	1,639	1,528	1,601	1,567	1,327	17,956	100%	-32.6%

Table 4 All Injuries by Age Groups

Age Groups	2000	2001	2002	2003	2004	2005	2006	2007	2008	2009	2010	Total	% of Total	% Change 2010 vs. 2000
15-24	905	836	757	737	746	735	735	688	647	633	518	7,937	44.2%	-42.8%
25-34	398	375	331	325	316	314	310	282	311	329	280	3,571	19.9%	-29.6%
35-44	343	304	274	273	266	241	253	231	259	212	189	2,845	15.8%	-44.9%
45-54	193	210	173	170	206	173	205	188	232	231	204	2,185	12.2%	5.7%
55+	56	93	62	82	87	101	103	99	106	113	104	1,006	5.6%	85.7%
Not Coded	73	45	35	19	24	16	33	40	46	49	32	412	2.3%	-56.2%
Total	1,968	1,863	1,632	1,606	1,645	1,580	1,639	1,528	1,601	1,567	1,327	17,956	100.0%	-32.6%

Table 5 All Injuries by Part of Body Injured

Part of Body (Stickman Code)	2000	2001	2002	2003	2004	2005	2006	2007	2008	2009	2010	Total	% of Total	% Change 2010 vs. 2000
Hand / fingers	856	841	760	691	724	707	748	651	657	646	521	7,802	43.5%	-39%
Multiple	262	238	206	219	212	195	209	243	230	223	228	2,465	13.7%	-13%
Lower arm	195	176	142	161	147	155	148	135	167	126	112	1,664	9.3%	-43%
Low back	189	184	142	139	127	130	123	116	117	144	105	1,516	8.4%	-44%
Lower leg	131	116	104	107	138	124	116	113	131	139	94	1,313	7.3%	-28%
Foot / toes	65	47	42	43	41	42	59	41	61	57	48	546	3.0%	-26%
Eyes	57	51	40	44	58	44	53	43	40	49	36	515	2.9%	-37%
Other	52	60	38	42	35	44	50	44	37	36	42	480	2.7%	-19%
Shoulder	44	41	33	36	52	42	33	32	39	34	32	418	2.3%	-27%
Head	27	33	36	29	26	29	26	33	34	44	34	351	2.0%	26%
Ribs / chest	31	26	23	35	34	23	26	30	27	19	23	297	1.7%	-26%
Abdomen	12	7	16	15	15	11	5	11	9	12	6	119	0.7%	-50%
Upper leg	8	8	3	6	9	6	8	8	5	10	9	80	0.4%	13%
Cardio / respiratory	8	7	15	6	5	5	8	10	7	1	4	76	0.4%	-50%
Upper back	10	4	7	6	2	6	7	4	11	8	10	75	0.4%	0%
Neck	8	10	8	9	7	3	5	3	12	1	6	72	0.4%	-25%
Upper arm	5	4	10	7	6	5	6	4	9	6	4	66	0.4%	-20%
Pelvis	4	6	5	6	5	7	5	5	6	6	9	64	0.4%	125%
Industrial disease	2	4	0	3	1	0	2	1	2	3	0	18	0.1%	-100%
Hearing	1	0	0	0	0	2	2	1	0	3	4	13	0.1%	300%
Missing/ Not Coded	1	0	2	2	1	0	0	0	0	0	0	6	0.0%	-100%
Total	1,968	1,863	1,632	1,606	1,645	1,580	1,639	1,528	1,601	1,567	1,327	17,956	100%	-33%

Table 6 Time Loss Injuries by Part of Body Injured

Part of Body (Z795 Code)	2000	2001	2002	2003	2004	2005	2006	2007	2008	2009	2010	Total	% of Total	% Change 2010 vs. 2000
Fingers	163	185	156	151	143	159	172	152	139	145	108	1,673	21.1%	-33.7%
Back including spine & spinal cord	146	160	133	138	128	129	116	122	112	116	100	1,400	17.6%	-31.5%
Multiple body parts	105	107	74	76	57	51	70	69	78	70	91	848	10.7%	-13.3%
Other upper extremities	64	60	70	68	69	53	51	66	83	69	82	735	9.3%	28.1%
Hands / wrists except fingers	123	125	91	91	123	109	115	108	93	84	47	1,109	14.0%	-61.8%
Other trunk	65	60	49	64	58	52	40	58	55	44	47	592	7.5%	-27.7%
Legs	37	48	54	42	58	43	48	41	55	64	46	536	6.7%	24.3%
Ankles / foot (not toes)	56	47	32	45	47	35	49	43	54	54	30	492	6.2%	-46.4%
Other lower extremities	15	6	8	9	10	13	18	12	28	23	22	164	2.1%	46.7%
Other head	11	17	22	10	12	16	11	16	14	20	13	162	2.0%	18.2%
Body systems	8	12	8	4	3	6	5	9	8	3	11	77	1.0%	37.5%
Eyes	7	6	4	4	11	10	7	10	11	17	6	93	1.2%	-14.3%
Not coded	10	4	1	1	3	0	0	0	2	1	3	25	0.3%	-70.0%
Neck	4	4	2	6	3	4	1	3	4	4	2	37	0.5%	-50.0%
Other	0	0	1	0	0	0	0	0	0	0	0	1	0.0%	-
Unknown	0	0	1	0	0	0	0	0	0	0	0	1	0.0%	-
Total	814	841	706	709	725	680	703	709	736	714	608	7,945	100.0%	-25.3%

Table 7 Nature of Injury (Time Loss Injuries)

Nature of Injury (Z795 Codes)	2000	2001	2002	2003	2004	2005	2006	2007	2008	2009	2010	Total	% of Total	% Change 2010 vs. 2000
Sprains, Strains, Tears	264	280	263	261	273	269	251	270	274	290	227	2,922	36.8%	-14.0%
Open Wounds	177	189	159	153	153	161	178	171	157	156	110	1,764	22.2%	-37.9%
Other Traumatic Injuries and Disorders	89	91	60	41	30	23	23	33	73	51	82	596	7.5%	-7.9%
Burns	102	110	94	86	109	90	95	102	105	97	72	1,062	13.4%	-29.4%
Surface Wounds, Bruises	77	70	60	76	84	74	59	62	56	64	42	724	9.1%	-45.5%
Fractures, Dislocations	36	34	30	37	37	29	48	34	38	34	30	387	4.9%	-16.7%
Systemic Diseases and Disorders	50	51	30	39	30	27	33	27	26	18	15	346	4.4%	-70.0%
Nature of Disease Unknown	0	0	5	5	0	0	14	5	2	0	11	42	0.5%	-
Symptoms, Signs, Ill-Defined Conditions	3	3	1	2	1	3	0	2	0	1	10	26	0.3%	233.3%
Other Diseases, Conditions and Disorders	6	9	2	1	1	4	2	3	4	2	6	40	0.5%	-
Not coded	10	4	1	1	3	0	0	0	1	1	3	24	0.3%	-70.0%
Multiple Diseases, Conditions and Disorders	0	0	1	7	4	0	0	0	0	0	0	12	0.2%	-
Total	814	841	706	709	725	680	703	709	736	714	608	7,945	100%	-25.3%

Table 8 Source of Injury (Time Loss Injuries)

Source of Injury (Z795 Codes)	2000	2001	2002	2003	2004	2005	2006	2007	2008	2009	2010	Total	% of Total	% Change 2010 vs. 2000
Structures and surfaces	150	157	125	132	158	136	155	142	188	153	140	1,636	20.6%	-6.7%
Containers	153	124	99	109	126	122	129	109	102	121	111	1,305	16.4%	-27.5%
Bodily motion or position of worker	146	213	156	148	112	113	112	105	110	108	88	1,411	17.8%	-39.7%
Hand tools - non-powered	86	107	89	76	71	83	90	102	81	72	63	920	11.6%	-26.7%
Machinery	71	49	45	57	78	63	61	64	74	63	54	679	8.5%	-23.9%
Furniture and fixtures	42	28	32	47	33	33	24	41	34	31	39	384	4.8%	-7.1%
Other sources	36	38	53	35	37	35	31	43	45	48	34	435	5.5%	-5.6%
Other persons, plants, animals and minerals	40	52	37	47	55	46	46	41	41	41	21	467	5.9%	-47.5%
Persons - other than injured worker	14	11	17	11	7	12	9	11	16	23	14	145	1.8%	0.0%
Parts and materials	24	23	23	14	17	18	12	19	16	20	13	199	2.5%	-45.8%
Chemicals and chemical products	10	11	7	14	10	6	9	11	13	16	11	118	1.5%	10.0%
Vehicles	20	10	9	10	10	9	12	7	5	13	8	113	1.4%	-60.0%
Other tools and machinery	4	3	5	4	6	3	10	9	5	3	7	59	0.7%	75.0%
Not coded	10	4	1	1	3	0	0	0	1	1	3	24	0.3%	-70.0%
Source - unknown	4	10	8	2	0	0	3	3	2	0	2	34	0.4%	-50.0%
Hand tools - powered	4	1	0	2	1	1	0	1	2	1	0	13	0.2%	-100.0%
Minerals - metallic or non-metallic (except fuel)	0	0	0	0	1	0	0	1	1	0	0	3	0.0%	-
Total	814	841	706	709	725	680	703	709	736	714	608	7,945	100.0%	-25.3%

Table 9 Event Causing Injury (Time Loss Injuries)

EVENT CAUSING INJURY (Z795 CODES)	2000	2001	2002	2003	2004	2005	2006	2007	2008	2009	2010	TOTAL	% OF TOTAL	% CHANGE 2010 VS. 2000
Struck by objects	151	165	151	130	123	144	140	147	132	201	191	1,675	21.1%	26.5%
Fall on same level	117	129	97	105	130	111	115	121	155	124	119	1,323	16.7%	1.7%
Overexertion	133	95	75	88	78	90	82	73	84	95	73	966	12.2%	-45.1%
Bodily reaction	112	163	141	125	97	92	78	86	79	88	71	1,132	14.2%	-36.6%
Exposure to harmful substances	111	126	105	98	112	98	108	114	107	110	61	1,150	14.5%	-45.0%
Caught in objects	17	13	10	25	24	13	18	24	24	29	21	218	2.7%	23.5%
Struck against objects	86	69	67	82	96	74	88	89	83	4	19	757	9.5%	-77.9%
Fall to lower level	23	20	23	19	25	14	27	13	21	16	18	219	2.8%	-21.7%
Repetitive motion	31	41	16	22	22	24	37	29	31	20	17	290	3.7%	-45.2%
Assaults and violent acts by person	14	10	16	11	4	10	7	11	14	19	13	129	1.6%	-7.1%
Not coded	10	4	1	1	3	0	0	0	1	1	3	24	0.3%	-70.0%
Transportation accidents	5	1	2	1	2	3	1	2	1	3	1	22	0.3%	-80.0%
Rubbed or abraded	3	4	1	2	8	7	1	0	2	4	1	33	0.4%	-66.7%
Fires and explosions	0	0	0	0	1	0	0	0	0	0	0	1	0.0%	-
Event - unknown	1	1	1	0	0	0	1	0	2	0	0	6	0.1%	-100.0%
Total	814	841	706	709	725	680	703	709	736	714	608	7,945	100.0%	-25.3%

Table 10 Occupation of Injured Workers (time loss injuries)

Occupations	2000	2001	2002	2003	2004	2005	2006	2007	2008	2009	2010	Total	% of Total	% Change 2010 vs. 2000
Cooks	224	233	179	204	173	190	213	198	207	171	153	2,145	27.0%	-31.7%
Food counter attendants, kitchen helpers and related occupations	66	59	54	123	185	161	165	172	177	195	135	1,492	18.8%	104.5%
Food and beverage servers	141	142	95	60	79	60	74	84	71	76	64	946	11.9%	-54.6%
Light duty cleaners	78	72	52	65	63	46	57	52	70	77	51	683	8.6%	-34.6%
Food service supervisors	21	15	11	37	27	21	25	34	30	23	23	267	3.4%	9.5%
Restaurant and food service managers	26	24	32	19	34	38	27	38	23	28	22	311	3.9%	-15.4%
Cashiers	11	11	18	18	24	19	13	15	19	11	17	176	2.2%	54.5%
Janitors, caretakers and building superintendents	27	18	20	25	31	21	21	16	18	22	17	236	3.0%	-37.0%
Security guards and related occupations	6	9	11	3	5	9	8	8	12	15	15	101	1.3%	150.0%
Bakers	13	21	7	23	16	20	15	15	21	9	13	173	2.2%	0.0%
Bartenders	18	23	13	26	13	25	20	11	11	14	13	187	2.4%	-27.8%
Other trades helpers and labourers	0	16	9	14	6	8	9	5	12	3	10	92	1.2%	#DIV/0!
Chefs	5	15	6	7	7	16	8	5	3	1	8	81	1.0%	60.0%
Hotel front desk clerks	3	10	3	5	3	1	2	4	5	9	7	52	0.7%	133.3%
Labourers in food, beverage and tobacco processing	2	2	4	2	6	9	15	11	9	6	7	73	0.9%	250.0%
Delivery and courier service drivers	15	6	6	3	7	5	2	3	2	3	5	57	0.7%	-66.7%
Other Occupations	66	69	75	74	43	31	29	38	45	50	39	559	7.0%	-40.9%
Missing/ Not Coded	92	96	111	1	3	0	0	0	1	1	9	314	4.0%	-90.2%
Total	814	841	706	709	725	680	703	709	736	714	608	7,945	100.0%	-25.3%

Table 11 Musculoskeletal Injuries (Time Loss Injuries)

Musculoskeletal / Non Musculoskeletal Injuries	2000	2001	2002	2003	2004	2005	2006	2007	2008	2009	2010	Totals	% of Total	% Change 2010 vs. 2000
Musculoskeletal Injuries	325	324	283	288	305	294	276	287	297	304	246	3,229	40.6%	-24%
Non Musculoskeletal Injuries	489	517	423	421	420	386	427	422	439	410	362	4,716	59.4%	-26%
Total	814	841	706	709	725	680	703	709	736	714	608	7,945	100.0%	-25%
% MSIs	39.9%	38.5%	40.1%	40.6%	42.1%	43.2%	39.3%	40.5%	40.4%	42.6%	40.5%	40.6%	-	-
MSI Rate per 100 FTEs	1.1	1.1	1	1	1	1	0.9	0.8	0.8	0.8	-	-	-	-
Non-MSI Rate per 100 FTEs	1.6	1.7	1.4	1.4	1.4	1.3	1.3	1.2	1.2	1.1	-	-	-	-
Accommodation and Restaurants time loss Injury Rate	2.7	2.8	2.4	2.4	2.4	2.3	2.2	2.1	2.1	1.9	-	-	-	-